

Trimble County Extension April 2025 ~ Newsletter



4-H Youth Development
Family & Consumer Sciences
Agriculture and Natural Resources

Trimble County Cooperative Extension
43 High Country Lane
Bedford, KY 40006
ph 502.255.7188
webpage: trimble.ca.uky.edu

4-H CAMP



\$175

Aid
available

JUNE 30- JULY 4

KENTUCKY 4-H CAMPING CENTER
LAKE CUMBERLAND KENTUCKY

Canoeing ~Swimming ~Shooting Sports
~High Ropes ~Hiking ~Endless Fun!

Now accepting camper
applications for Youth ages 9 - 14.
Counselor in Training, teen leaders
and adults applications also
available.

Please call or stop by the
Extension office to
reserve your spot!

\$25 deposit required with rsvp



Cooperative
Extension Service

Agriculture and Natural Resources
Family and Consumer Sciences
4-H Youth Development
Community and Economic Development

MARTIN-GATTON COLLEGE OF AGRICULTURE, FOOD AND ENVIRONMENT

Educational programs of Kentucky Cooperative Extension serve all people regardless of economic or social status and will not discriminate on the basis of race, color, ethnic origin, national origin, creed, religion, political belief, sex, sexual orientation, gender identity, gender expression, pregnancy, marital status, genetic information, age, veteran status, physical or mental disability or reprisal or retaliation for prior civil rights activity. Reasonable accommodation of disability may be available with prior notice. Program information may be made available in languages other than English. University of Kentucky, Kentucky State University, U.S. Department of Agriculture, and Kentucky Counties, Cooperating. Lexington, KY 40506



Disabilities
accommodated
with prior notification.

4H Youth Development



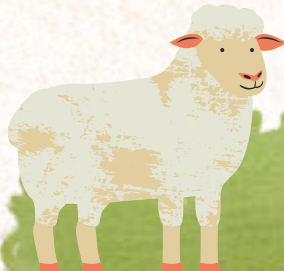
4H HORSE CLUB

TUESDAY, APRIL 8 ~ 6:30 PM
CRAIG FAMILY FARM - CALL FOR ADDRESS



4H LIVESTOCK CLUB

TUESDAY, APRIL 15 ~ 6:30 PM
TRIMBLE COUNTY EXTENSION SERVICE



4H COMMUNICATIONS CONTEST

April 17, 2025 6:00 p.m.
Trimble County Extension Service

All youth ages 9 - 18 years are invited to participate in the Trimble County Communications event. This event provides 4-H youth the opportunity to practice public speaking skills and receive positive constructive suggestions for improvement.

Areas for participating in the event are demonstrations, speeches, talent show and mock interview. Youth can choose their own topic:

**Horticulture & Plant Science ~ Care of Animals ~ Forestry
Wildlife ~ Drawing, painting, crafts ~ Clothing & Textiles
Foods - prepare a recipe ~ Health and fitness ~ Science projects**



Details of the categories and tip sheets on how to prepare your speech or demonstration are available through the Extension Service. Please call (502) 255-7188 for information and to rsvp.

Family and Consumer Sciences

Agent for Family and Consumer Sciences

Trimble Thimbles Sewing Group

Trimble County Extension Service
9:00 a.m. ~ 2nd & 4th Saturday of each month
April dates: 4/12 & 4/26
New or experienced - All are welcome!

Simply Sharing Homemakers Pressing Flowers

April 16, 2025 10:30 a.m.
Trimble County Extension Service

A pitch in lunch will follow the lesson. Please call to rsvp (502) 255-7188

Louisville Area Homemakers International Luncheon

April 24, 2025 ~ 11:30 a.m.
Shelby County Extension Service

*All Trimble County Homemakers are invited to attend.
Contact the Trimble County Extension Service for more information.*



FCS Upcoming Dates at a glance . .

4/9 Charcuterie 101
4/12 Trimble Thimbles
4/16 Simply Sharing Homemakers
4/24 International Luncheon
4/26 Trimble Thimbles
5/5 Pet Essentials Series



Community Connections

Charcuterie 101 presented by The Flavor Queen, Janine Washle

April 9, 2025 ~ 6:00 p.m.
Trimble County Extension Service

Introducing "Community Connections" - a group designed to unite people through crafting, food, and meaningful interactions. Whether you enjoy crafting, cooking or simply want to meet other in Trimble County, this group will offer fun activities, learning opportunities, and social events to build lasting friendships and strengthen our community, one connection at a time.

Cost: \$5.00 Everyone will take home a Charcuterie Cup
RSVP by 4/4/25 (502) 255-7188
Class size is limited!



Pet Essentials Series

Trimble County Extension Service
6:00 PM on the following dates:

**May 5, 2025- Golden Years Together:
Thriving Alongside Your Pet**

**May 12, 2025- Smart Paws: The Benefits of
Dog Training for a Happy, Healthy Pet**

**May 19, 2025-
Nose to Tail Care for Cats and Dogs:
When is it an Emergency?**

*Call to rsvp for one or all:
(502) 255-7188*



Agriculture & Natural Resources

Regina Utz
Agent for Ag & Natural Resources

Upcoming Dates

- April 3rd: Growing Bucket Mushrooms
Trimble County Extension Office, 6pm
- April 10th: Tobacco GAP Training (virtual or in-person)
Trimble County Extension Office, 10am
- April 10th: Gardening Basics: Plans and Preparations
Henry County Extension Office, 6pm
- April 11th: TCFM Training 10am - noon
Trimble County Extension Office, Lunch provided!
- April 16th: Growing Flowers in your Garden
Trimble County Extension Office, 6pm
- May 1st: Farmers Mrkt Kick Off - Courthouse, Bedford
- May 6th: Raised Bed Gardens 6pm -Trimble Extension

*As always, any questions about programs or agriculture needs please do not hesitate to reach out!
regina.utz@uky.edu or (502) 255-7188*

Farm Service Agency Update

USDA's Farm Service Agency is issuing up to \$10 billion in direct payments to eligible agricultural producers of eligible commodities for the 2024 crop year through the Emergency Commodity Assistance Program (ECAP). These one-time economic assistance payments will help commodity producers mitigate the impacts of increased input costs and falling commodity prices. For more information visit:

<https://www.fsa.usda.gov/ecap>
<https://www.fsa.usda.gov/ecap/payment-calculator>

Questions please contact Katie Taylor
katie.taylor@usda.gov (502) 732-6931

PASTURE WALK

APRIL 7 ~ 5:30 P.M.

**You are invited to join us on a pasture walk!
We will identify good grasses and legumes to keep in the fields while also identify weeds to treat.**

Location: Heveline Farm, Milton, KY
Call Trimble Extension office for address: (502) 255-7188

UK Cooperative Extension Service
An equal opportunity employer

Growing Cut Flowers

April 16, 2025 6:00 p.m.

Trimble County Extension Service

Add cut flowers to your garden this year
to bring your garden indoors!
Call to rsvp (502) 255-7188

Trimble County Cattlemen Assoc Meal & Meeting

April 28, 2025 ~ 6:00 p.m.

Sponsor and presenter:

Dr Clark Slone, DVM, Carroll County Animal Clinic

Farmers Market Kick Off

May 1, 2025 ~ 3:00 - 7:00 p.m.

Courthouse Square, Bedford

Vendor applications available now at the Trimble
Extension office

Raised Bed Gardens Build & Fill

May 6, 2025 ~ 6:00 p.m.

Trimble County Extension Service

Join this fun demonstration on building
and filling your own raised bed!
Call to rsvp (502) 255-7188

Preparing for Severe weather: What You Need to Know

Tony Edwards, National Weather Service

In parts of the Deep South, the risk of severe thunderstorms persists throughout the winter months. For us here in the Bluegrass State, however, we're quickly approaching a time when thunderstorms become both more frequent and more intense. As winter storms make way for spring, severe weather—including damaging winds, hail, and even tornadoes—becomes the primary concern.

As I write this article in mid-March, much of the Bluegrass State is already facing the threat of severe weather, a common occurrence for this time of year. Data from the National Weather Service's Storm Prediction Center reveals that the likelihood of severe weather increases as March progresses, peaking in mid-June at around 4%. This means, based on historical data alone, residents of Kentucky have a 4% chance of experiencing damaging winds, hail larger than quarters, or a tornado within 25 miles of their home in the middle of June! The risk then significantly decreases by mid-September.

Given this, now is the time to start preparing for the upcoming severe weather season. The first step is simple: be aware that severe weather is a real possibility. Make checking your local forecast part of your daily routine to stay informed and prepared.

- Did You Know? The National Weather Service (NWS) offices that serve Kentucky offer a 24-hour recorded weather forecast, and in many cases, you can even speak to a live person if you have questions about the forecast. Contact your local NWS office to learn more!

Preparing for Severe Weather

When severe weather is in the forecast, it's essential to take action ahead of time. Start by ensuring you have access to emergency supplies. This is particularly important if you live in an area prone to flooding and might need to evacuate on short notice.

Make sure you know where your safe spaces are. In most cases, this is the lowest floor of your house—preferably a basement. If you don't have a basement, an interior room with no windows and doors will suffice. If you own livestock, consider moving them to a protected area, especially if hail is in the forecast.

Stay Informed on Severe Weather Days

When severe weather is expected, it's crucial to stay vigilant. Be prepared to adjust outdoor plans if necessary and remain alert to weather updates.

- Did You Know? NOAA Weather Radios are specialized devices designed to broadcast weather information and activate alarms when severe weather alerts are issued. Many models run on battery or solar power and do not include an AM/FM radio. You're likely near a transmitter, making this a reliable option to stay updated. Check out these handy radios at your local store to keep your home prepared.

Understanding Watches and Warnings

- Severe Thunderstorm and Tornado Watches: Issued when conditions are favorable for severe weather or tornadoes in the near future.
- Severe Thunderstorm and Tornado Warnings: Issued when severe weather or tornadoes are occurring or imminent. This is when you need to act fast!

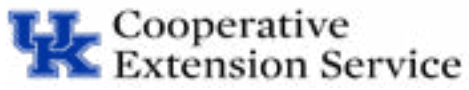
Knowing what to do and where to go is essential.

SEVERE WEATHER HAZARDS

Over 280 fatalities occur each year in the U.S. from thunderstorm related hazards.

[weather.gov/safety](https://www.weather.gov/safety)

- TORNADO**
Take shelter immediately in a sturdy structure
- LARGE HAIL**
Move indoors away from windows
- SEVERE WIND**
Move indoors away from windows
- FLOODING**
Avoid rising creeks and water covered roads
- LIGHTNING**
Move indoors if you hear thunder



Trimble County
PO Box 244
43 High Country Lane
Bedford, KY 40006-0244

RETURN SERVICE REQUESTED

NONPROFIT ORG
US POSTAGE PAID
BEDFORD KY
PERMIT 11

Scan here to
visit our webpage!

