

Trimble County Extension
September 2023 ~ Newsletter

4-H Youth Development
Family & Consumer Sciences
Agriculture and Natural Resources



Martin-Gatton
College of Agriculture,
Food and Environment

Trimble County
43 High Country Lane
Bedford, KY 40006
Phone (502) 255-7188

Trimble
Extension

OPEN HOUSE

OCTOBER 10, 2023
4:00 - 7:00 P.M.

◆

Showcase of Extension programs

Farm animals

Story Walk

Brays Ice Cream

Fun Giveaways & Raffle

Come join us!

OPEN TO THE
COMMUNITY, NO COST
TO ATTEND!

4-H Youth Development

Welcome to 4-H

Trimble County 4th-6th grade School Clubs!

How to Enroll?

You are already enrolled in Trimble County 4-H through your class at school! By participating in an in-school club you will be signed up to receive our Trimble County Extension Newsletter. Inside this newsletter you will be able to find information about Trimble County 4-H and University of Kentucky Cooperative Extension programs.

When does 4-H Meet?

I will be coming to your school once a month beginning in September to conduct 4-H meetings and teach educational classes. Each month we will have something different and new to learn about.

If you would like to participate in anything outside your 4-H School Club like Agriculture Club, Horse Club, Communications Contest, Country Ham Program, Shooting Sports, Project Days, 4-H Camp, Teen Leadership Conferences and opportunities, you can contact the Trimble County Extension office at (502) 255-7188 for more information.

You can also check us out online at our county website: www.trimble.ca.uky.edu
Trimble County Cooperative Extension Service is on Facebook as well!

My email is: ralph.hance@uky.edu



Extension Agent for 4-H Youth Development



4-H Agriculture Club

September 19, 2023
6:30 p.m.

Trimble County Extension Service

Come join us as we begin the new program year. Monthly meetings will educate members on proper care, nutrition and working with animals for showing in the county livestock shows.

New and returning members welcome!

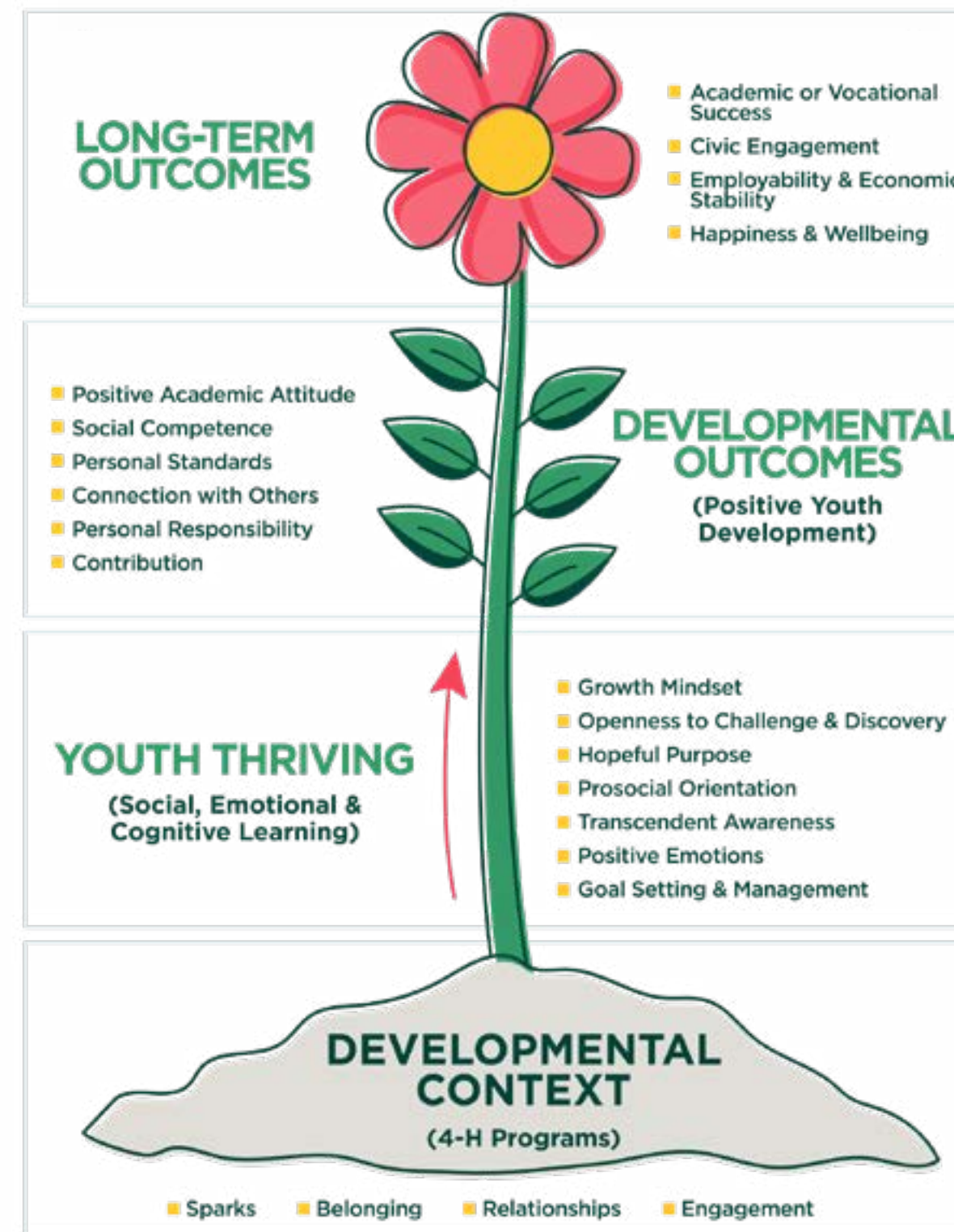
The 4-H Thriving Model is the theory of change for positive youth development in 4-H. The model at right illustrates the process of positive youth development in 4-H programs by connecting high quality program settings to the promotion of youth thriving.

We will be featuring a different indicator over the course of several newsletters.

Interested Adults are encouraged to join us as volunteers to aid in positive youth development in Trimble County!

4-H is Positive Youth Development

4-H is based on a positive youth development (PYD) approach that recognizes all youth have interests, abilities, and strengths that can be enhanced by participation in 4-H programs. Research shows that participation in high quality 4-H programs increases thriving in youth, and thriving youth achieve important developmental outcomes, such as academic motivation and achievement.



Trimble Thimbles

Come view the Trimble Thimbles quilts at the Trimble County Apple Festival!

September 9 & 10, 2023
Courthouse Square, Bedford, KY

Trimble Thimbles meet monthly at the Trimble County Park, Senior Center. Next meeting is Saturday, September 16, 10:00 a.m. All are welcome to join!

Simply Sharing Homemakers

Field Trip: September 20, 2023 ~ 10:30 a.m.
Meet at Trimble Extension Service

We will visit Kentucky Ridge Roasters, shop at Homestead Antiques & Old Time Market, with a stop at Rowletts Milkhouse Creamery for ice cream!

Must rsvp: (502) 255-7188



Upcoming Events & Dates: September

- September 6th: Raising Meat Rabbits Trimble County Extension Office, 6:00 p.m.
 - September 7th: No-Till Basics Henry County Fairgrounds, 5:00 p.m.
MUST RSVP for meal provided (502) 845-2811
 - September 9th: Cook Wild KY Trimble County Extension Office, 9:00 am - 1:00 p.m.
 - September 12th: Hemp Educational Sessions & Field Day
Pirri Equine Pavilion, 2011 Star Pilot Ln, Lexington, KY 40511
 - September 14th: NKY Beef Field Day
Eden Shale Farms, 245 Eden Shale Rd, Owenton, KY 40359. 6:00 pm
 - September 18th: Winterizing your Garden Trimble County Extension Office, 6:00 pm
 - September 21st: Third Thursday Thing- PawPaws
KYSU Harold R. Benson Farm, 10:00 a.m. -OR- www.youtube.com/kysuag/live
 - September 21st: Beef Bash Versailles, KY 1:00 - 8:00 p.m.
Registration Required! <https://www.eventbrite.com/e/beef-bash-2023-tickets-653214491127>
 - September 26th: Regional Beef Field Day 3:30 p.m.
Reality Farms, 794 Port Royal Rd. Campbellsburg, KY
 - September 27th: All About PawPaws
Trimble County Extension Office, 10:00 a.m.
- October**
- October 3rd: Birding in the Bluegrass , Fall Edition Trimble County Extension Office, 6:00 p.m.
 - October 5th: Homesteading 101 Trimble County Extension Office, 10:00 a.m.
 - October 10th: Trimble County Extension Open House 4:00 - 7:00 p.m.
 - October 23rd: Trimble County Cattlemen's Meeting
Trimble County Extension Office, 6pm

Regina By
Agent for Ag & Natural Resources

All About PAWPAWS

America's Forgotten Fruit!

- Growing from Seed
- Grafting
- Where to buy
- Uses

Trimble County Extension Service
September 27, 2023
10:00 a.m.
rsvp to 502.255.7188



Raising Meat Rabbits

September 6, 2023
6:00 p.m.

Trimble County Extension

- Breeds
- Raising to Maturity
- Recipes



Preparing Your Garden for Winter

September 18, 2023
6:00 p.m.

Trimble County Extension

- ~ Composting
- ~ Soil Testing
- ~ Cover Crops



Thursday, September 21 | 1:00 - 8:00 PM
UK Oran C. Little Research Farm
1051 Midway Road Versailles, KY



- Growing list of 40+ industry exhibitors
- Farm tours & presentations from USDA Researchers, UK Extension Faculty, Meat Science Researchers
- Updates on research & education facilities
- Dinner prepared by Woodford Co. Cattlemen's Association

To register, search "Beef Bash" at [eventbrite.com](https://www.eventbrite.com)
 Questions? Contact Tyler Purvis, UK Beef Extension, tapu228@uky.edu




Reality Farms
794 Port Royal Road
Campbellsburg, KY
Registration & Trade Show
begins at 3:30 p.m.
Rotations 4:00 p.m.
Meal 7:00 p.m.

Please rsvp by
September 15, 2023
(502) 255-7188

rain doesn't come? In our area of Western KY several of the crop farmers have installed irrigation pivots and this year the pivots have been in full use. But what about the years when we get ample moisture, were the pivots a waste of money? Farmers will tell you that even in wet years the pivots pay, because it allows them to "swing for the fences" in terms of plant population, genetics and fertilization strategies knowing that if the rains don't come, the pivots can be turned on.

So, if farming under pivots allows for "swinging for the fences", what is the right strategy for pasture systems? Since most pasture systems do not have the access to irrigation, maybe a combination of stock water development along with a "small ball" approach might be more appropriate. Having water within 800 feet of grazing animals during the summer grazing season is a good goal. Missouri research shows that water within 800 feet results in improved forage utilization and more even nutrient distribution. Fencing and developing water access to the "back forty" or that field that has only been historically used for hay could also be considered. Water development will allow for rotational grazing and rotational grazing will enable you to better withstand dry periods and grow more forage. How you use that extra forage is the next decision. Do we increase stocking rates or do we summer stockpile for drought insurance or winter stockpile to reduce feeding days? Deciding what to do with extra forage is a great problem to have.

A quote from a presentation by John Genho, of Eldon Farms in Virginia at the 2019 Forages at KCA Symposium comes to mind. "The economic optimum is always under the biological optimum when it comes to stocking rates. We should always run a few less cows than a field can actually carry to make the most money."

The proceedings of his talk can be found on the UK Forages webpage at the following link: Profitability at Eldon Farms: Guiding Principles (uky.edu)

We are currently experiencing "World Series Championship Prices" for our cattle. These prices only come along every 8-10 years. Hopefully these prices result in added income that can be used to improve infrastructure in our grazing programs. These improvements when coupled with "small ball" stocking rate strategies, will help ensure economic survival over the long haul to make it to the next "Championship" price year. Or we could simply sit around hoping that every year the wind blows in our favor.

Swinging for the Fences, Small Ball, and Water Issues

Kevin Laurent, Extension Specialist, Department of Animal and Food Sciences, University of Kentucky

My alma mater recently won the College Baseball World Series. All season long this team was ranked in the top five for home runs and total runs scored. Their approach was to "swing for the fences" or as it's known in South Louisiana, "Geauxrilla Ball". As impressive as their offensive stats were during the regular season, two areas of huge concern going into the World Series was their inability to play "small ball" (laying down bunts to advance the runner) and the inconsistent play of their bullpen. The College World Series for many years was played at historic Rosenblatt Stadium in Omaha, Nebraska and it was known as a hitter's ballpark. Several years ago, a new stadium was built and is oriented so that batters are hitting into the prevailing winds, therefore home run production dropped dramatically. So, if you can't knock it out the park, pitching and "small ball" becomes more important. Although my alma mater struggled in these areas of the game throughout the season, fortunately during the World Series, pitching improved and for the most part, the weather conditions and wind direction were in their favor. So, was LSU just lucky? Not necessarily, but they did get a few lucky breaks as any championship team needs to win it all.

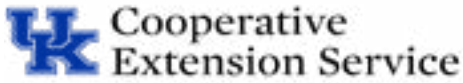
So how does any of this relate to water issues and producing beef? I think we can all agree that the subject of rain-fall has been uppermost on our minds this spring and summer. At one point in late spring conditions seemed eerily similar to the drought of 2012. As I write this in early July, most areas of the state have received timely rains and hopefully this will continue. Mother Nature has a way of exposing the weak areas of production systems and the last several months are a prime example. Ask yourself a few questions. During the recent dry spell: Did you feel like you were overstocked? Were stock water ponds getting low and overused, resulting in poor water quality? Did you have any areas of the farm with ample grass but no access to stock water? Do you have a backup plan when

Scan the code below to take the survey




TRIMBLE COUNTY
How can we serve you?
 Take a ten-minute survey to help us develop programs addressing needs in our community.

go.uky.edu/serveKY
 KENTUCKY COOPERATIVE EXTENSION



Trimble County
PO Box 244
43 High Country Lane
Bedford, KY 40006-0244

RETURN SERVICE REQUESTED

NONPROFIT ORG
US POSTAGE PAID
BEDFORD KY
PERMIT 11

Scan here to
visit our webpage!



Cooperative Extension Service

Agriculture and Natural Resources
Family and Consumer Sciences
4-H Youth Development
Community and Economic Development

MARTIN-GATTON COLLEGE OF AGRICULTURE, FOOD AND ENVIRONMENT

Educational programs of Kentucky Cooperative Extension serve all people regardless of economic or social status and will not discriminate on the basis of race, color, ethnic origin, national origin, creed, religion, political belief, sex, sexual orientation, gender identity, gender expression, pregnancy, marital status, genetic information, age, veteran status, physical or mental disability or reprisal or retaliation for prior civil rights activity. Reasonable accommodation of disability may be available with prior notice. Program information may be made available in languages other than English. University of Kentucky, Kentucky State University, U.S. Department of Agriculture, and Kentucky Genetics Cooperative. Lexington, KY 40506



Disabilities
accommodated
with prior notification.